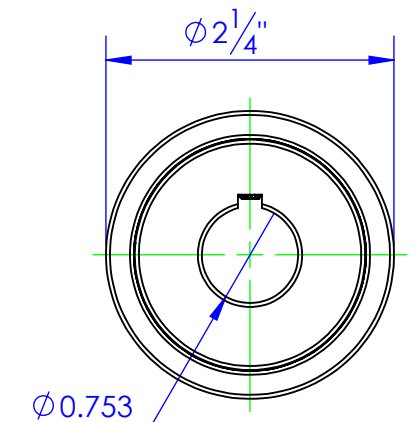
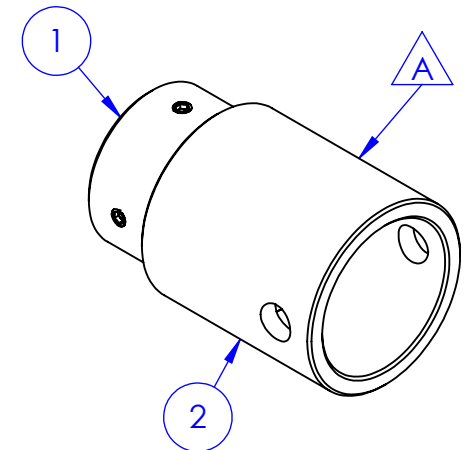
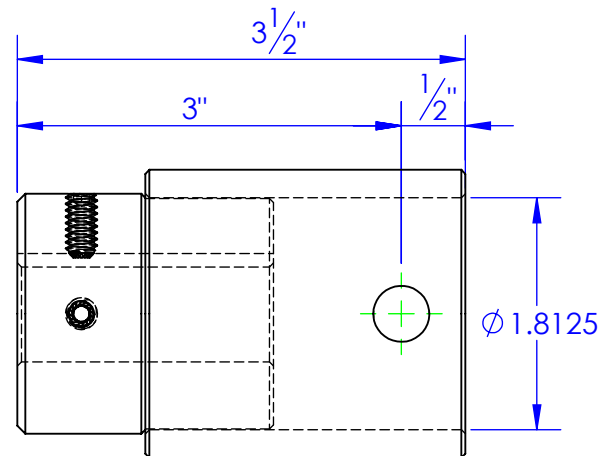
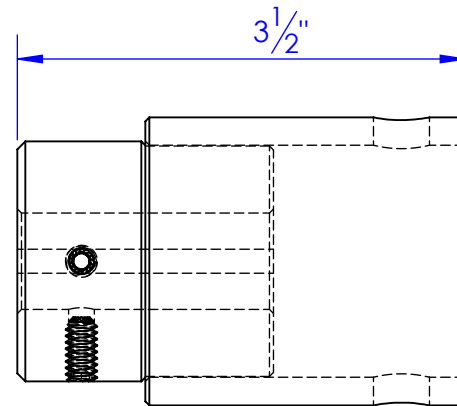
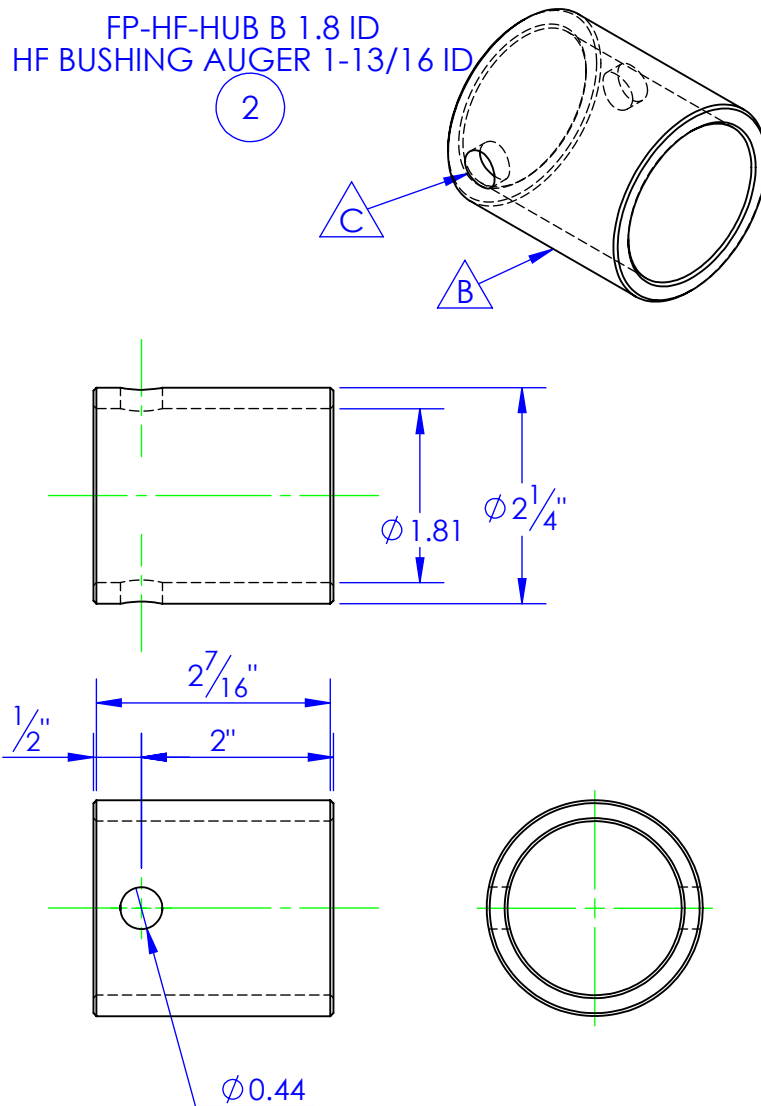


ITEM NO.	PART NUMBER	DESCRIPTION	DRAWING #	QTY.
1	FP-EL-HUB 1.8 OD	KEYED HUB, 1.8 OD. .753 ID W/ 3/16 KEYWAY	30-2418	1
2	FP-HF-HUB B 1.8 ID	HF BUSHING AUGER 1-13/16 ID	30-1412	1

REV.	REVISIONS DESCRIPTION	DATE	APPROVED
A	INITIAL RELEASE	6/27/2012	
B	ADDED PART # TO ST-MT 2-1/4 x 1-13/16	8/30/2012	
C	CHANGED HOLE Ø TO 7/16 FROM 3/8	9/13/2012	

FP-HF-HUB B 1.8 ID
HF BUSHING AUGER 1-13/16 ID



PROPRIETARY AND CONFIDENTIAL
THE INFORMATION CONTAINED IN THIS
DRAWING IS THE SOLE PROPERTY OF TRIPLE
C INC. ANY REPRODUCTION IN PART OR
AS A WHOLE WITHOUT THE WRITTEN
PERMISSION OF TRIPLE C INC. IS PROHIBITED.

DIMENSIONS ARE IN INCHES TOLERANCES: FRACTIONAL $\pm 1/16$ ANGULAR: MACH ± 1 BEND \pm TWO PLACE DECIMAL ± 010 THREE PLACE DECIMAL ± 005			NAME	DATE
DRAWN		HEATH	9/25/2012	
PART #		HF-EL HUB .753 ID		
ASM #				
COMMENTS:				
MATERIAL		---	WELDED HUB .753 I.D ELECTRIC FEEDER	
DO NOT SCALE DRAWING				

P.O. BOX 248,
SABETHA, KS 66534

TRIPLE C
INC.

SIZE A	DWG. NO. 30-1412 C	REV. C
SCALE: 1:1.5	WEIGHT: 2.20	SHEET 1 OF 1